

PRODUCT POSITIONING

Light on your feet and light on the planet, our latest addition to the Spin family is a versatile and highly cushioned trail running shoe with serious sustainability chops. The highly breathable upper is made from 100% recycled content, while the midsole, outsole and footbed all feature significant recycled content as well. If you are as serious about sustainability as you are about trail running, the Spin Planet is your solution for the long haul.



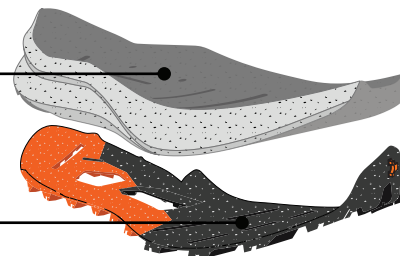
M 33063/350



W 33063/352

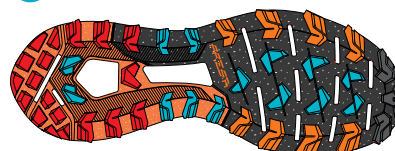
High volume cushioned midsole in medium density EVA for stability and thrust response (45% Recycled)

PRESA® outsole with ATR compound which combines high grip and durability (30% Recycled Rubber)



STACK
HEEL 24.5MM / TOE 18.5MM
DROP 6MM

05



PROPULSION AREA
BREAKING AREA
MAXIMUM GRIP AREA
STABILITY AREA

FEATURES AND BENEFITS

- 01** **Recycled Upper:** Highly breather upper made with 100% recycled content, Axial TTR Tech tongue means a low-bulk, wrapping closure
- 02** **EXO Construction:** Internal support matrix wraps mid-foot and adds stability
- 03** **Footbed:** EVA footbed with 20% recycled content
- 04** **Midsole:** High volume cushioned midsole with 45% recycled content adds stability and provides longer lasting cushion
- 05** **Outsole:** PRESA® outsole with ATR compound, has 30% recycled rubber and 4.5mm lugs for great traction

SPECIFICATIONS

Upper: Recycled Mesh + Recycled Microfiber
 Lining: Recycled Microfiber
 Insole: Strobel
 Midsole: CM-EVA (45% Recycled)
 Outsole: PRESA® TRN-06
 Last: (M) ARSP
 (W) ARSPW
 Sizes: (M) 40-46 (½ sizes), 47-48 (whole sizes)
 (W) 36-43 (½ sizes)
 Weight: (M) 290g; 10.2oz (½ pair, size 42)
 (W) 260g; 9.2oz (½ pair, size 38)
 Origin: Vietnam

TECHNOLOGIES

PRESA®
Powering SCARPA

EXO

ECO

TECHNOLOGY · MATERIALS · CONSTRUCTION

PRESA® TRN-06 Outsole — SCARPA's expertise is readily evident in our proprietary PRESA outsole collection, born from 80+ years of footwear design expertise and craftsmanship. PRESA® outsoles are purpose-designed specifically for each product by SCARPA's expert technicians, and rigorously tested in the field to ensure they meet our performance requirements. Careful lug design and placement ensures optimizes traction and performance while minimizing weight. With **30% recycled rubber**, the TRN-06 outsole is heavy on performance, but light on the planet, providing additional peace of mind as you pursue your outdoor adventures.

EXO Construction — Highly breathable upper mesh is backed by our EXO internal support matrix, adding lateral upper stability and a foot-wrapping fit. External welded PU reinforcements on the upper add additional structure, support and abrasion resistance.

Axial TR Tech Construction — An idea borrowed from our market-leading expertise in backcountry ski boots, the Axial TR Tech construction features a tongue that seamlessly interfaces with the upper on the medial side and use a minimal overlap and partial Sock-Fit style wrap on the lateral side. This delivers a minimal yet supportive and wrapping fit across the instep, reducing weight and bulk.

SCARPA Planet Friendly — Our products tread the most wonderful and unspoiled landscapes on earth. We feel we must do our best to preserve these landscapes. "Planet Friendly", products made of environment-friendly materials refer to products in which materials and processes are specifically chosen for their environmentally friendly characteristics.

FIT:

ARSP last. Medium minus heel and midfoot fit, with a slightly narrow, lower volume forefoot. A more precise fit for running in technical, rocky terrain or scrambling.