

RIBELLE® RUN & RIBELLE® RUN^{WMN}

33071/351 & 352

PRODUCT POSITIONING

Highly durable and technically precise, the lightweight Ribelle® Run is the ideal choice for short to medium distance training and racing in rugged, rocky terrain. The upper is mesh and welded PU that is reinforced with a translucent ripstop for extra abrasion resistance. A climbing inspired, full-perimeter TPU rand provides more structure and a high level of protection. The fit is more precise due to a medium width last that is slightly lower volume, giving it a precise feel and allowing secure navigation of technical trails. This fit is further enhanced by our Sock-Fit Slip On construction, where the ankle collar is integrated with the tongue in a stretch fabric, reducing bulk and sealing out trail debris. Finishing off the upper is our quick cinch lacing system for a quick and secure closure. Underfoot, our SuperGum rubber compound provides outstanding traction and friction, and is more durable than comparable rubber.



M 33071/351



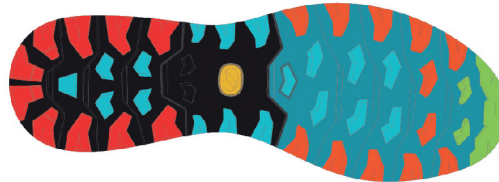
W 33071/352

04 Medium density EVA midsole for long-lasting cushioning

05 Presa® outsole in SuperGum rubber compound for increased traction and friction



STACK
Heel 24.5mm/Toe 20.5mm
Drop 4mm



- PROPULSION AREA
- BRAKING AREA
- MAXIMUM GRIP AREA
- STABILITY AREA

FEATURES AND BENEFITS

- 01 **Mesh & PU Upper:** Lightweight, breathable mesh with overlays of thermally welded PU film and translucent ripstop holds foot securely in place and provides support and protection.
- 02 **SOCK-FIT LW:** Stretch fabric ankle collar incorporated with a minimal stretch tongue provides gentle wrapping and support, reducing bulk and enhancing fit, and seals out trail debris.
- 03 **Full Perimeter Rand:** Climbing inspired TPU rand encircles the perimeter of the shoe providing 360 degree support and protection.
- 04 **Midsole:** Medium density EVA midsole provides lightweight cushioning and impact absorption.
- 05 **Outsole:** PRESA® sole made with high performance rubber outsole, with 4 mm lugs and excellent grip on both dry and wet surfaces. Tested by the best and brought to the limit on technical and uneven terrain.

SPECIFICATIONS

Upper: Mesh / PU Film / Ripstop
 Lining: Polyester
 Insole: Strobel
 Midsole: EVA Midsole
 Outsole: PRESA® TRN-01 / SuperGum
 Last: Men's - ARSF
 Women's - ARSFW
 Sizes: Men's - 40-47 (1/2 sizes); 48 (whole sizes)
 Women's - 36-42 (1/2 sizes)
 Weight: Men's - 300g; 10.6oz (1/2 pair, size 42)
 Women's - 260g; 9.2oz (1/2 pair size 38)
 Origin: China

TECHNOLOGIES



RIBELLE® RUN & RIBELLE® RUN^{WMN}**33071 / 351 & 352****TECHNOLOGY - MATERIALS - CONSTRUCTION**

Full Perimeter Rand – Inspired by our expertise in climbing and approach shoes, the midsole and upper of the Ribelle® Run are fully integrated by a tensioned TPU rand that completely encircles the shoe, providing 360 degrees of support and protection. This rand construction gives the shoe a very precise fit and feel, making it ideal for technical, rocky terrain where precision foot placements are a must. The rand also provides additional structure to the upper for improved lateral support, and a high level of protection from abrasion.



PRESA® Outsole – PRESA® is SCARPA's proprietary outsole brand, born out of 80+ years of technical outsole design experience, to deliver the best traction solutions available. The outsole is molded in our exclusive **SuperGum Eco rubber**, with 3mm deep lugs designed with specific inclinations and angles to provide optimal traction, propulsion and braking, and features lateral grooves in the forefoot to enhance sole flex. The medial forefoot area features an edging zone, providing more rubber to surface contact under the big toe.

SuperGum Rubber – Exclusive to SCARPA, the SuperGum rubber compound was developed to provide equal or better slip resistance as compared to other high-friction rubbers but with vastly superior abrasion resistance. It was formulated to deliver high friction performance in both wet and dry conditions, but at the same time offers 3 times the abrasion resistance. SuperGum is the ideal rubber compound for SCARPA trail running shoes.

Ortholite® footbed - The footbed is made of Ortholite X40 Eco foam. Ortholite is an open-cell PU foam with great resistance to compression set (less than 5% compression set). The open-cell PU foam structure provides exceptional breathability, and the formulation also includes 5% recycled rubber content as well, providing enhanced rebound while lowering the impact on the planet at the same time.

SOCK-FIT^{LW}
BY SCARPA

Sock-Fit LW System – Sock-fit LW, or "Light Wrap" construction, is the most minimal version of Sock-fit that SCARPA offers. Most of our Trail Running models incorporate this innovative construction. The Sock-fit LW system uses a stretch material combined with a minimal, stretch tongue that wraps both sides and the top of the instep, eliminating the traditional gusset construction, providing gentle pressure and support to both reduce bulk and enhance the fit of the shoe.



FIT:
ARSF last. Medium minus heel and midfoot fit, with a slightly narrow, lower volume forefoot. A more precise fit for running in technical, rocky terrain or scrambling.

AVAILABLE COLORS

MEN'S | BLACK / LIME



MEN'S | AZURE / BLACK



WOMEN'S | BRIGHT RED / BLACK



WOMEN'S | LIGHT GREEN / GREEN