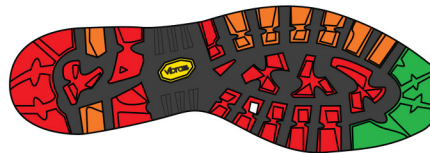
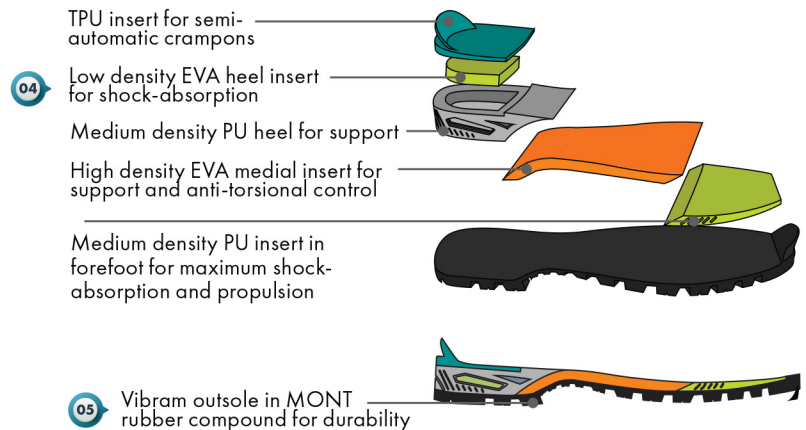


MANTA TECH^{GTX} & MANTA TECH^{GTX} WMN**87506/201 & 202****PRODUCT POSITIONING**

The Manta Tech GTX is our generalist mountain workhorse. A Perwanger® leather upper is combined with a GORE-TEX® Insulated Comfort lining and a full perimeter combination rand to make this boot warm, waterproof and tough as nails. The fit is slightly higher volume than some of our other mountain boots, perfect for thicker socks and longer days in the mountains. The classic fit has a flatter heel-to-toe profile, which accommodates a variety of semi-automatic crampon options. The Manta Tech GTX is the perfect choice for classic snow ridges, glacier travel and general mountaineering performance.

**M** 87506/201**W** 87506/202

THRUST AREA
BRAKING AREA
MAXIMUM GRIP AREA

FEATURES AND BENEFITS

- 01 **Perwanger® Leather upper:** Durable, supportive upper made from premium leather.
- 02 **GORE-TEX® Insulated Comfort:** Insulated Comfort lining means these boots are warm, waterproof and comfortable.
- 03 **Full perimeter rubber and PU Tech rand** for maximum performance and protection.
- 04 **Midsole:** Multi-density PU and TPU midsole provides long lasting support, shock absorption and protection
- 05 **Vibram® Pentax Precision XT outsole:** Molded with Mont rubber compound, offers the highest reliability on mountain terrain at low temperatures.

SPECIFICATIONS

Upper:	3mm Suede Perwanger®
Lining:	GORE-TEX® Insulated Comfort
Insole:	Fiber FT
Midsole:	PU + TPU
Outsole:	Vibram® Pentax Precision XT / Mont
Last:	FT
Sizes:	Men's - 39-47 (½ sizes); 48,49,50 (whole sizes) Women's - 36-42 (½ sizes)
Weight:	Men's - 860g; 1lb 14.3oz (½ pair, size 42) Women's - 780g; 1lb 9oz (½ pair size 38)
Origin:	Italy

TECHNOLOGIES

TECHNOLOGY - MATERIALS - CONSTRUCTION

Gore-Tex[®] Insulated Comfort – GORE-TEX[®] Insulated Comfort Footwear technology offers durable waterproof breathable protection paired with a 200gm insulation layer to keep you warm, dry & comfortable during a wide range of conditions and outdoor activities. The GORE-TEX[®] membrane provides the optimal combination of breathability and waterproof protection, so feet stay dry and comfortable, even in changing conditions, and excels in a wide range of outdoor activities in cool to cold conditions. All components (leathers, textiles, laces, foams, and threads) and the entire shoe construction itself are precisely coordinated and subjected to regular quality inspections to ensure guaranteed performance.

Vibram[®] outsole – The Vibram[®] outsole featuring Mont rubber compound is optimized for mountaineering activities. Vibram[®] Mont compound was specifically developed to provide the highest reliability in the most difficult terrain at lower temperatures, and has been tested to verify performance on the highest peaks in the world. The Mont compound is a firmer rubber for added durability and secure crampon interface.

Perwanger[®] Suede leather – Perwanger[®] is a family owned Italian leather tannery that has been in operation since 1780. They are recognized for making some of the finest and most durable leather for heavy duty outdoor applications like mountaineering and trekking. All Perwanger[®] leathers are the result of a careful process. Beginning with the hides, which are carefully selected from alpine cattle from the mountains of Northern Italy, the leather then undergoes special processing and finishing stages to deliver an extremely durable product, with a smooth and consistent surface grain that is highly water resistant and very durable – perfect for SCARPA mountaineering and trekking boots.



ACTIVfit Technology – ACTIVfit is a construction system that employs different last shapes, material combinations and construction techniques to provide the optimal fit and performance for the intended activity.

Last / Fit Description - the FT last was developed for a precise but comfortable fit for long days in the mountains, and is considered medium plus volume and width, with an accommodating fit featuring a bit more volume that is perfect for long days and general mountain use. It features great heel hold and fit through the midfoot with a little more room in the forefoot, and a classic, flatter heel-to-toe profile.

